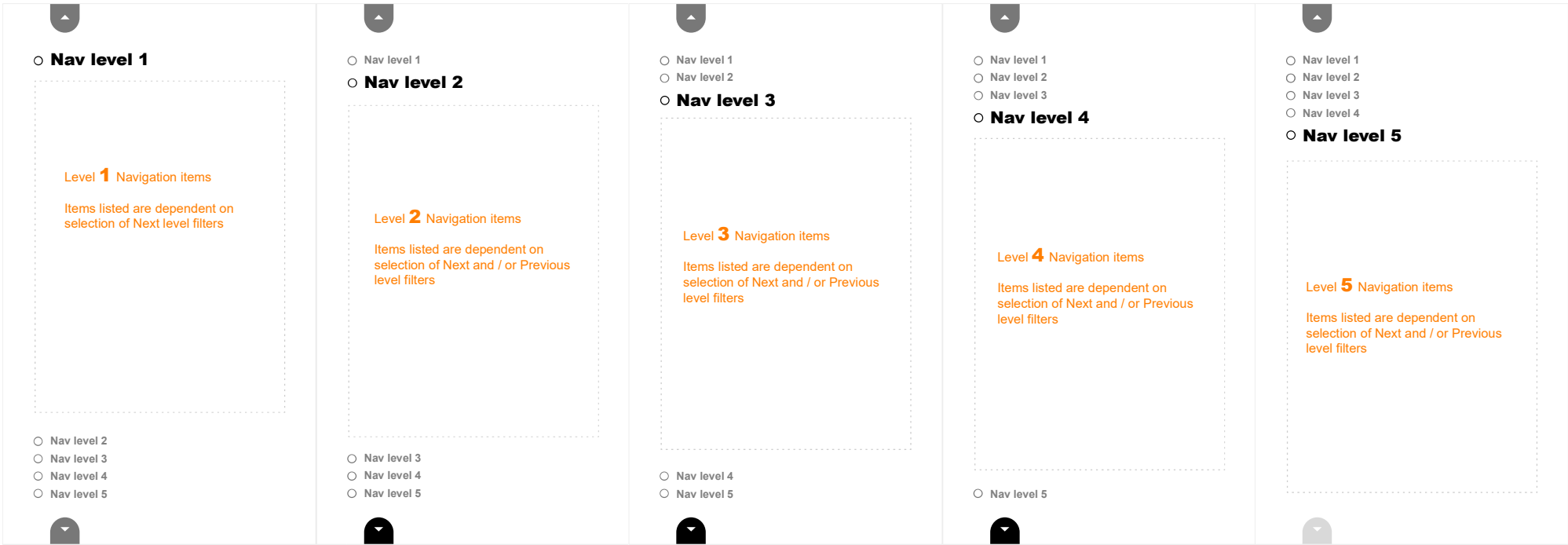


Hierarchical filter navigation overview



On initial opening of the graph filter the first level of graph metric labels are shown.

By default all Items are toggled ON and shown in aggregate mode.

On click of either the down arrow or the Nav level 2 label the relevant filter level will be displayed.

Level 2 label is clicked. The level 1 nav items will be hidden as Level 2 label moves up and level 2 content populates the filter area.

By default all Items are toggled ON and shown in aggregate mode.

On click of either the down arrow or the Nav level 3 label the relevant filter level will be displayed.

the level 2 nav items will be hidden as Level 3 label moves up and level 3 content populates the filter area

etc...

When the last level is reached, the down arrow is de-activated.

A. On click the Open filter button changes to say 'Close Filter' and the arrows change direction as well as any colour change.

The filter opens from left to right, squashing the graph horizontally towards the right hand edge.

The Filter opens, in the first instance, on the Product tab which contains x number of hierarchical navigation levels.

After first use, the filter opens showing the state it was in when it was last closed.

The filter opens displaying (in this example) a Product hierarchy of 5 levels of navigation (**B**).

The bullet points will be hollow by default.

The default state of a level is :

No change has been made to the visibility of any item on the level.

By default all levels are set to aggregate with all items toggled ON.

(B1) If a selection / deselection has been made on a level the change will be indicated via the Bullet point.

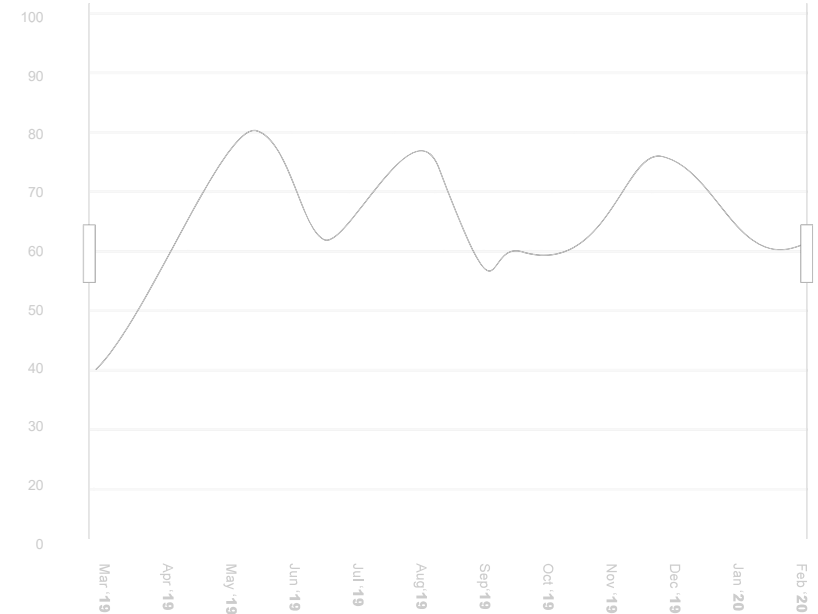
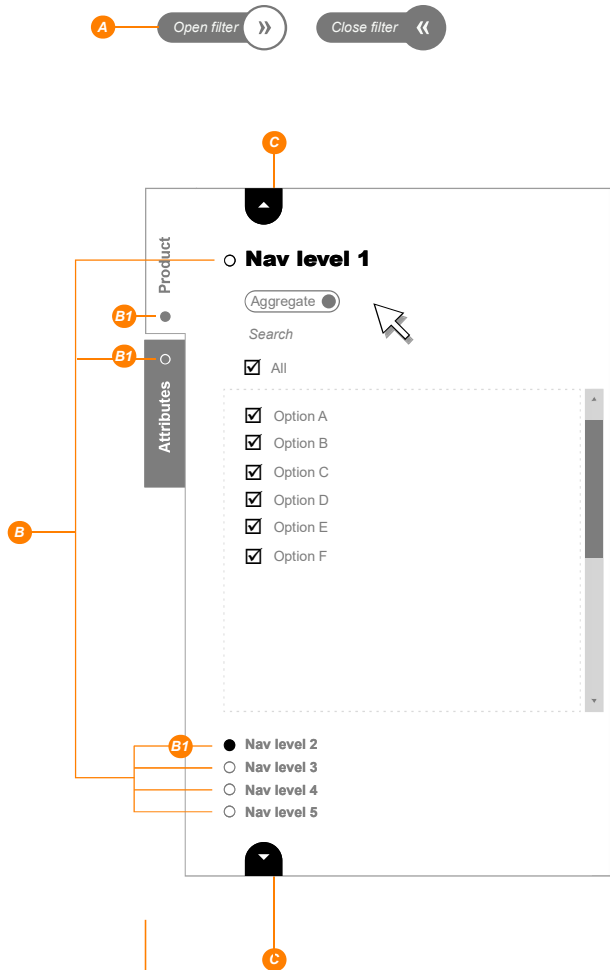
If **no change** has been made, the bullet point will be **hollow**.

If a **change** has been made the bullet point will be **Solid**

The levels of navigation can be accessed by either clicking on the level name label (**B**) or by clicking on the arrows top and bottom of the panel (**C**).

Each level maintains it's state when the user navigates to a different level.

If neccessary the X Axis legend will change to vertical format when size dictates.



Filter opens from left to right, pushing the left hand edge of the graph towards the right.



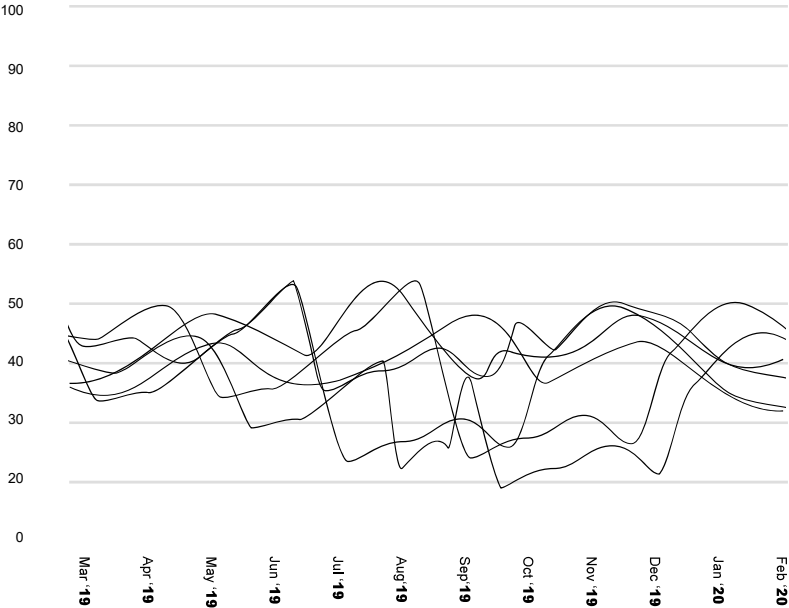
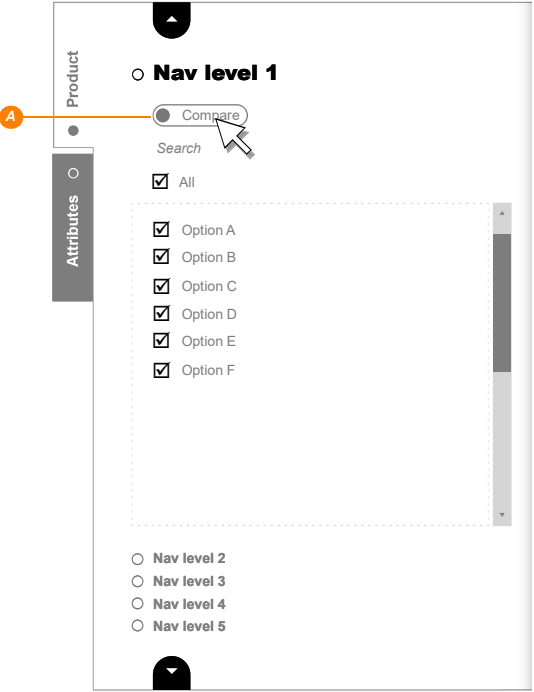
The graph will horizontally condense from left to right.
Graph lines will maintain stroke weight.

Axis legend will change to vertical format when size dictates.

The are two ways of showing selected metrics on the graph.

Button **(A)** toggles between the two views : Compare and Aggregate.

Compare : Each element is shown in comparrison to the other visible items as a separate line on the graph.

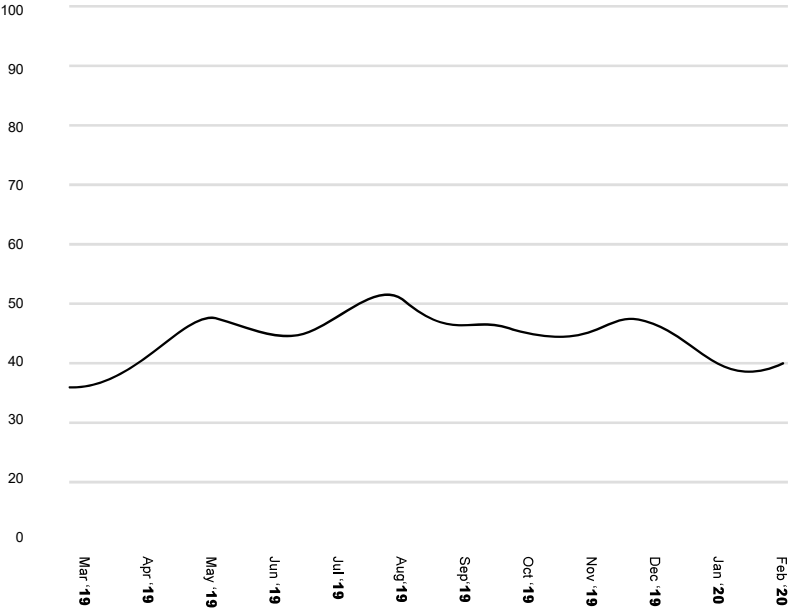
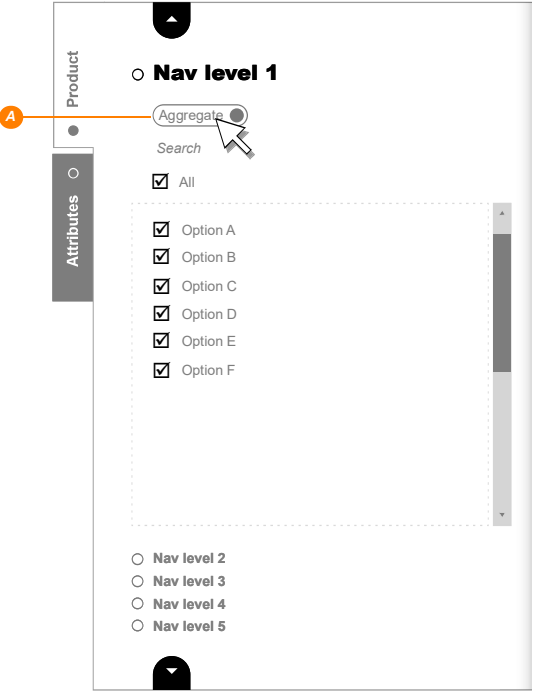


The are two ways of showing selected metrics on the graph.

Button **(A)** toggles between the two views : Compare and Aggregate.

Aggregate : all elements in the level are aggregated and shown as one line on the graph.

By default every level is set to Aggregate.



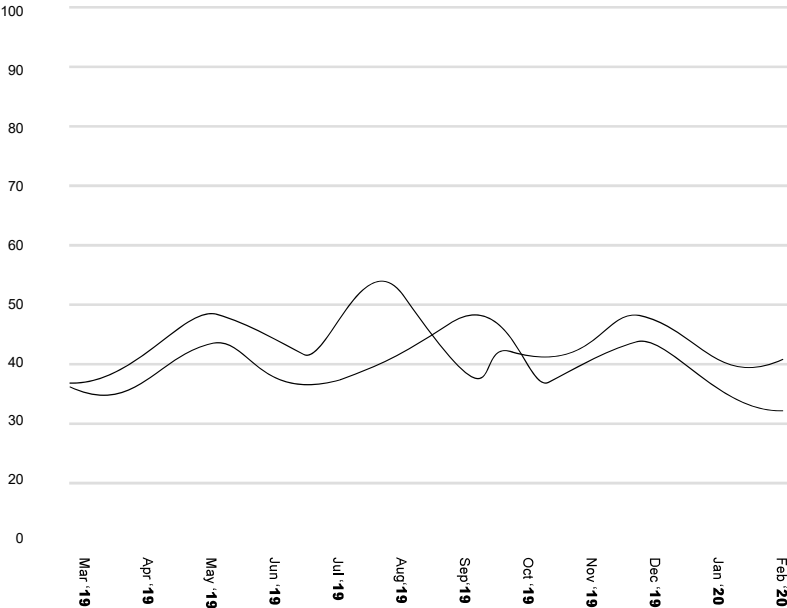
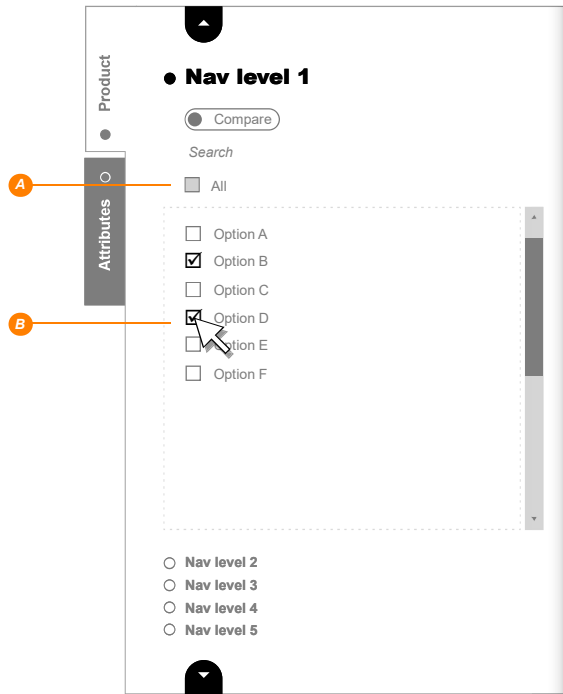
The elements from the current level displayed in the filter panel can have their visibility toggled On or Off by clicking the checkbox **(B)**

By default all items are toggled ON, and the level view is set to Aggregate.

All checkboxes on the current level can be toggled on or off by clicking the Level's global item toggle **(A)**.

The Global Toggle button has three states:

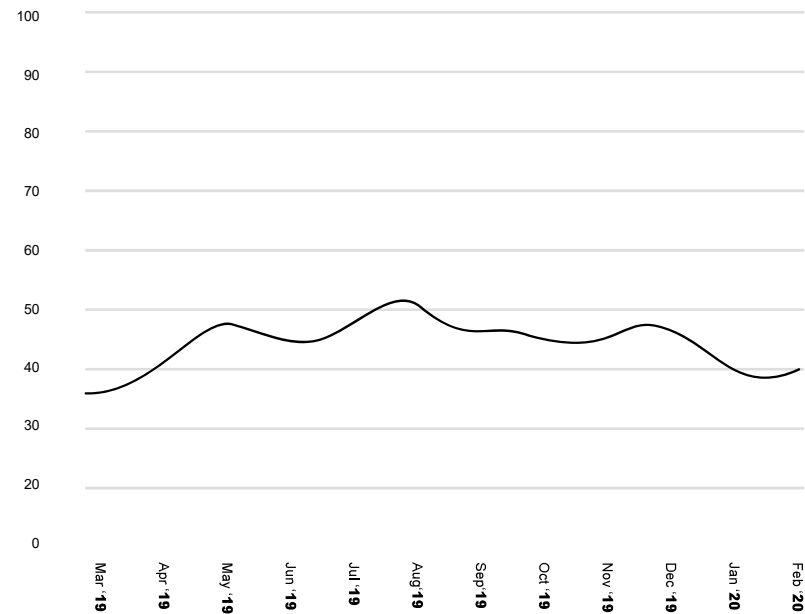
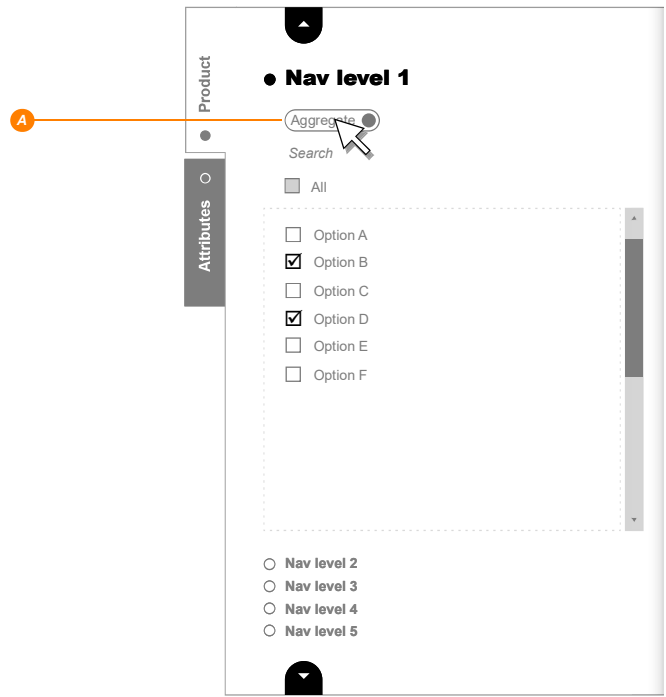
- ☒ **All items are visible.**
If clicked all items will have visibility turned Off.
- ☐ **No items are visible**
If clicked all items will have visibility turned On.
- ☐ **Some elements are visible**
If clicked all items will have visibility turned Off.



Level 1

When the Aggregate button is clicked (A) the aggregated line will only represent the checked options in the current level.

This graph shows **Option B** & **Option D** as one aggregated line.



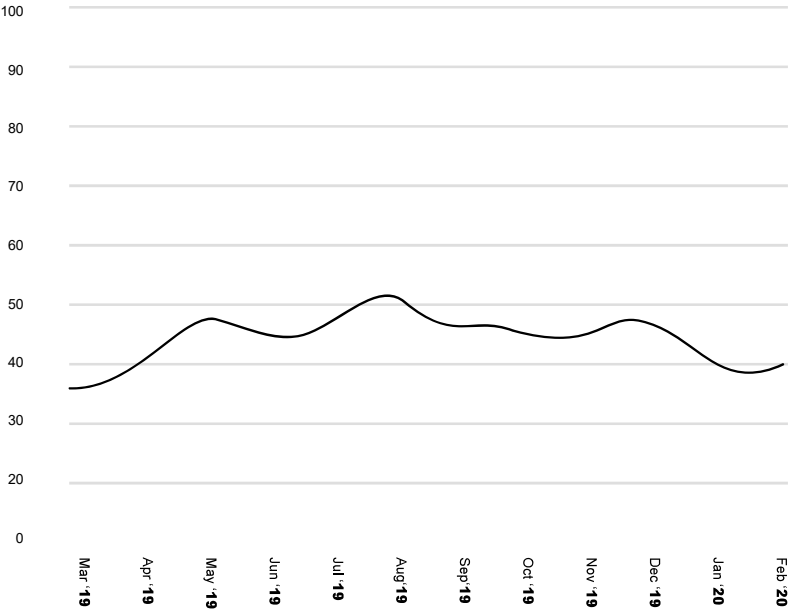
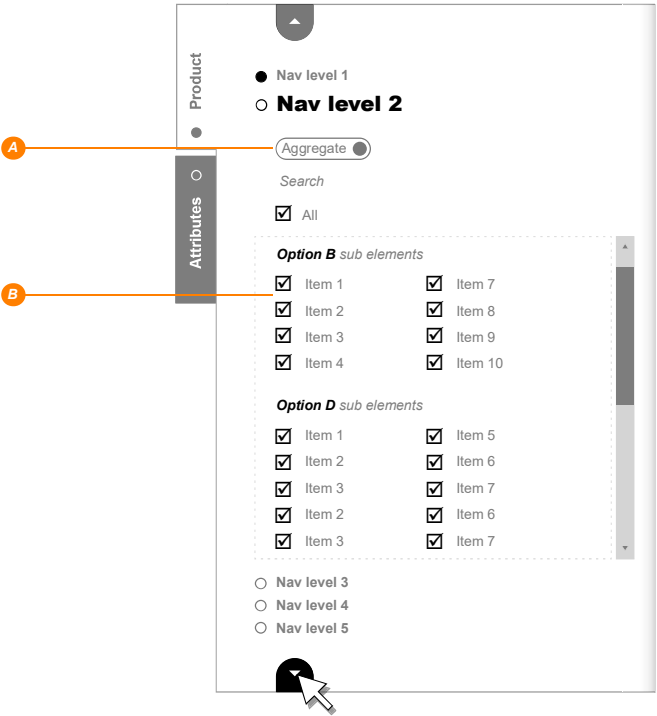
Level 2

Navigating and drilling down into level 2, the default view is an aggregated view of all items on this page.

The aggregate view of level 2 is dictated by the view mode of Level 1.

Level 1 was left in Aggregate view mode, leaving two products displayed as one line.

The aggregate view mode in level 2 will display all of the items aggregated to be displayed as the two products selected in Level 1 as one aggregated line.



Now there are only two elements of **Option B** and one element of **Option D** on display.

The view mode is Compare, the graph shows three items displayed as three lines.

Product

Attributes

● Nav level 1

● **Nav level 2**

● Compare

Search

All

Option B sub elements

☐ Item 1

☒ Item 2

☐ Item 3

☐ Item 4

☐ Item 7

☐ Item 8

☐ Item 9

☒ Item 10

Option D sub elements

☐ Item 1

☐ Item 2

☒ Item 3

☐ Item 3

☐ Item 5

☐ Item 6

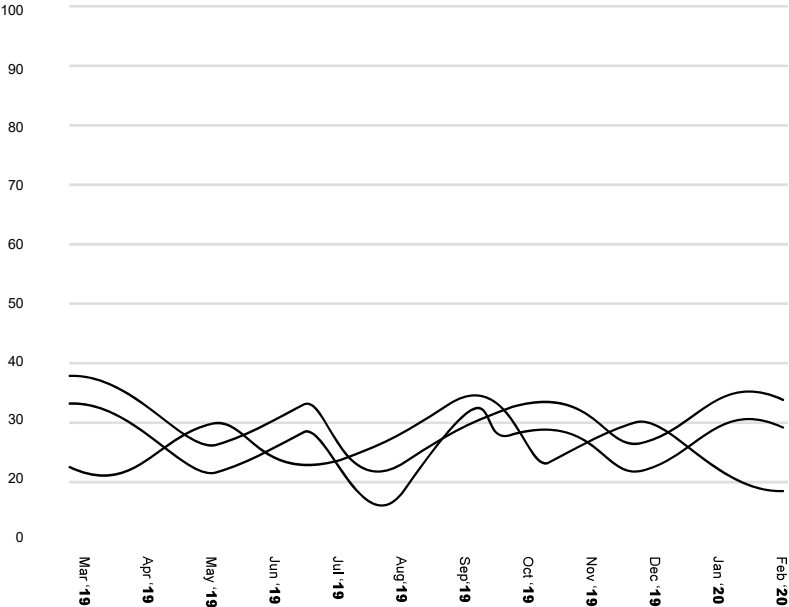
☐ Item 7

☐ Item 7

○ Nav level 3

○ Nav level 4

○ Nav level 5



Level 3

The aggregate view of level 3 is dictated by the view mode of Level 2.

Level 2 was left in Compare view mode, leaving three products displayed.

The aggregate view mode in level 3 will display all of the items aggregated to be displayed as the three products selected in Level 2.

Product

Attributes

● Nav level 1

● Nav level 2

○ Nav level 3

Aggregate

Search

☒ All

Option B, Item 2 sub elements

☒ Item 1

☒ Item 7

☒ Item 2

☒ Item 8

☒ Item 3

☒ Item 9

☒ Item 4

☒ Item 10

Option B, Item 10 sub elements

☒ Item 3

☒ Item 7

☒ Item 2

☒ Item 6

☒ Item 3

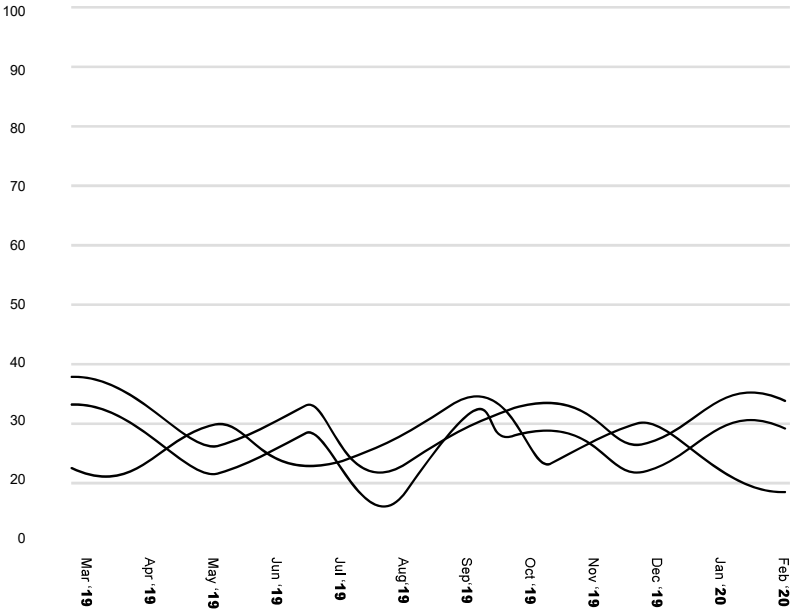
Option D, Item 3 sub elements

☒ Item 1

☒ Item 5

○ Nav level 4

○ Nav level 5



Leaving a level in compare mode

Level 1 is in compare view mode.
Two products have been selected.

Product

Attributes

Nav level 1

Compare

Search

All

Option A

Option B

Option C

Option D

Option E

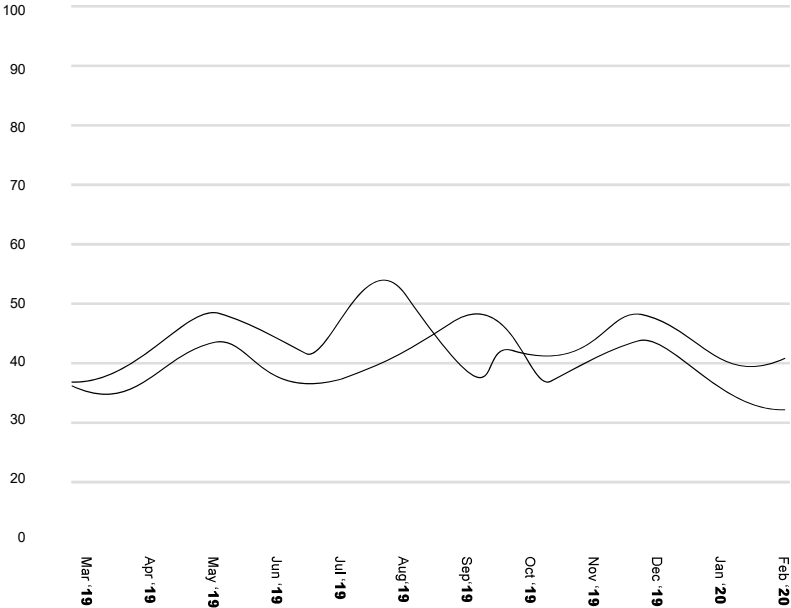
Option F

Nav level 2

Nav level 3

Nav level 4

Nav level 5



Level 2

The aggregate view of level 2 is dictated by the view mode of Level 1.

Level 1 was left in Compare view mode, leaving two products displayed.

The aggregate view mode in level 2 will display all of the items aggregated to be displayed as the two products selected in Level 1.

Product

Attributes

● Nav level 1

○ Nav level 2

Aggregate

Search

☒ All

Option B sub elements

☒ Item 1

☒ Item 2

☒ Item 3

☒ Item 4

☒ Item 7

☒ Item 8

☒ Item 9

☒ Item 10

Option D sub elements

☒ Item 1

☒ Item 2

☒ Item 3

☒ Item 2

☒ Item 3

☒ Item 5

☒ Item 6

☒ Item 7

☒ Item 6

☒ Item 7

○ Nav level 3

○ Nav level 4

○ Nav level 5

Month	Series 1 (Black)	Series 2 (Grey)
Mar '19	35	35
Apr '19	38	38
May '19	45	45
Jun '19	40	40
Jul '19	42	38
Aug '19	55	42
Sep '19	45	40
Oct '19	40	38
Nov '19	42	40
Dec '19	48	42
Jan '20	40	38
Feb '20	40	32

Graph Filter Wireframe V7

Each Item listed has three modes of visibility:

On, Off and Show separately.

ON. Item is shown on the graph as part of an Aggregated view or a Compared view.

OFF. Item is not displayed on the graph and is not used in any calculations.

Show separately. Item is displayed in isolation and does not effect any calculations in the view.

A Shown Separately item as selected from the 'show separately filter control' will be :

Displayed in the list with a dotted border.

Displayed on the graph as a dotted line.

Displayed in the Legend with a dotted border.

An item that has been selected to be shown separately can still be toggled on and off, the same as the other items.

The 'Show Separately' state can only be hidden from the 'Show Separately' control.

An Item can only be set to be displayed separately from a control (detailed in separate wireframe (tba))

The Show separately control is not part of the Graph filter.

Product

Attributes

● Nav level 1

○ Nav level 2

Aggregate

Search

☒ All

Option B sub elements

☒ Item 1

☒ Item 2

☒ Item 3

☒ Item 4

☒ Item 7

☒ Item 8

☒ Item 9

☒ Item 10

Option D sub elements

☒ Item 1

☒ Item 2

☒ Item 3

☒ Item 5

☒ Item 6

☒ Item 7

○ Nav level 3

○ Nav level 4

○ Nav level 5

Month	Solid Line (Approx.)	Dotted Black Line (Approx.)	Dotted Red Line (Approx.)
Mar '19	35	30	28
Apr '19	40	32	29
May '19	48	35	30
Jun '19	45	32	29
Jul '19	50	33	30
Aug '19	52	35	32
Sep '19	48	38	35
Oct '19	45	30	28
Nov '19	48	35	32
Dec '19	45	30	28
Jan '20	38	28	26
Feb '20	40	27	25

Graph Filter Wireframe V7

The shown separately item can be toggled On and Off in the same way as any other item.

Shown here :

Item 7 has been selected via the Show separately control (outside of the filter)

Visibility has been toggled off in the filter.

Product

Attributes

● Nav level 1

● **Nav level 2**

Aggregate

Search

☒ All

Option B sub elements

☒ Item 1

☒ Item 2

☒ Item 3

☒ Item 4

☒ Item 7

☒ Item 8

☒ Item 9

☒ Item 10

Option D sub elements

☒ Item 1

☒ Item 2

☒ Item 3

☒ Item 2

☒ Item 3

☒ Item 5

☒ Item 6

☒ Item 7

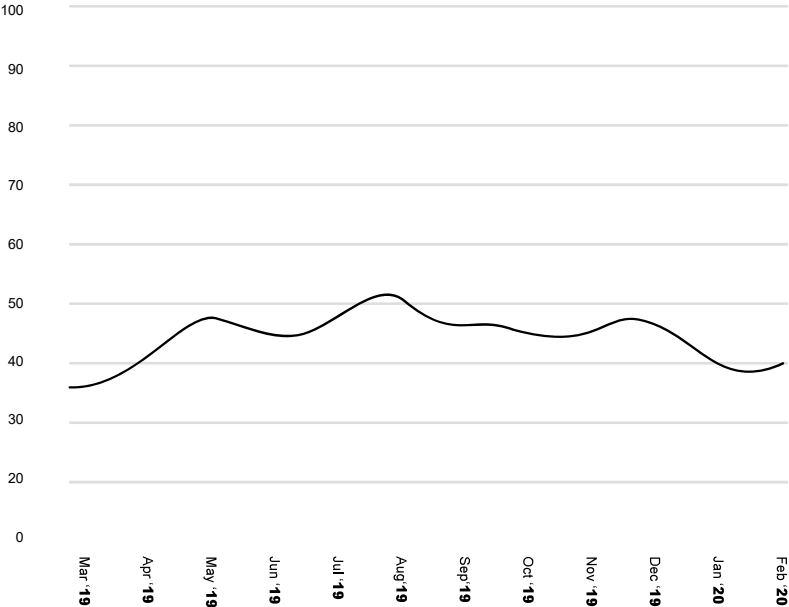
☒ Item 6

☐ Item 7

☐ Nav level 3

☐ Nav level 4

☐ Nav level 5



Attributes

Attributes are global factors that can be used to filter any item at any hierarchical level of navigation.

There is no hierarchy for attributes.

Product

Attributes

Attribute 1

Compare

All

Item 1

Item 2

Item 3

Item 4

Item 7

Item 8

Item 9

Item 10

Attribute 2

Compare

All

Item 1

Item 2

Item 3

Item 4

Item 7

Item 8

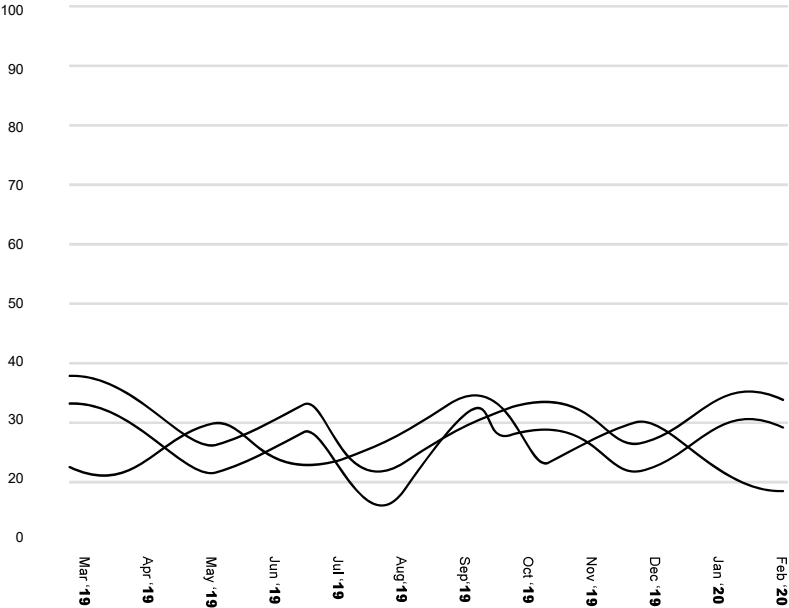
Item 9

Item 10

Attribute 3

Compare

All



Graph item state legend.

Toggled off



Toggled off while selected to display as separate line
(Separate line will remain visible until turned off from the 'Show separately' control)



Toggled on



Toggled on and displayed as separate line



Hover



Hover while displayed as separate line



Click



Click while displayed as separate line

